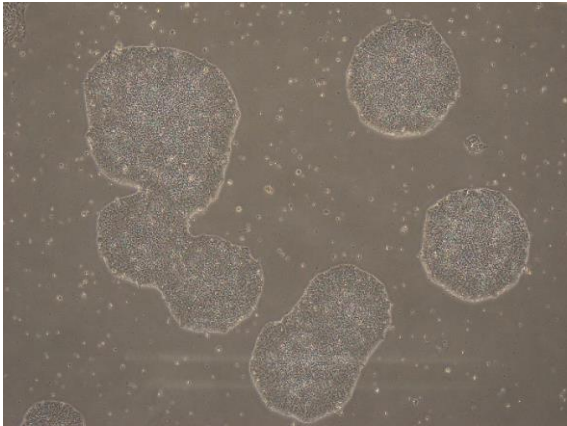
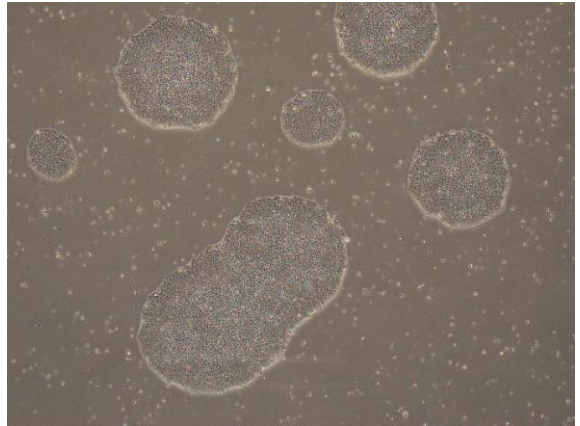


【 CiRA-j-1573 】 Morphology of iPSC colonies

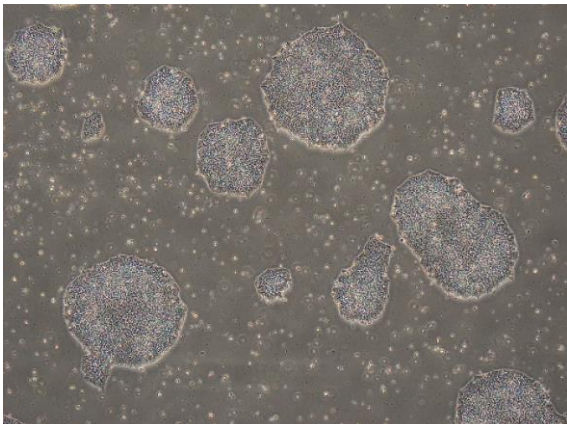
CiRA-j-1573-A: passage-3



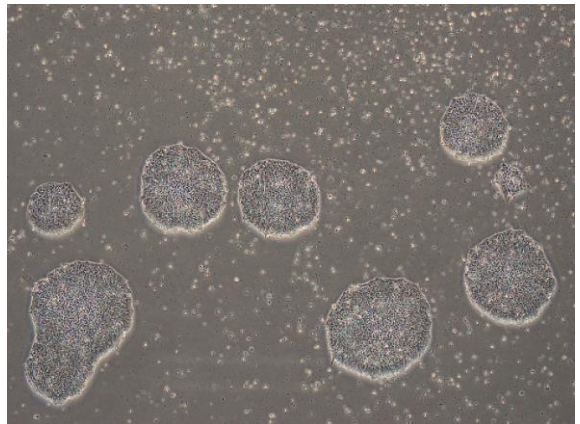
CiRA-j-1573-B: passage-3



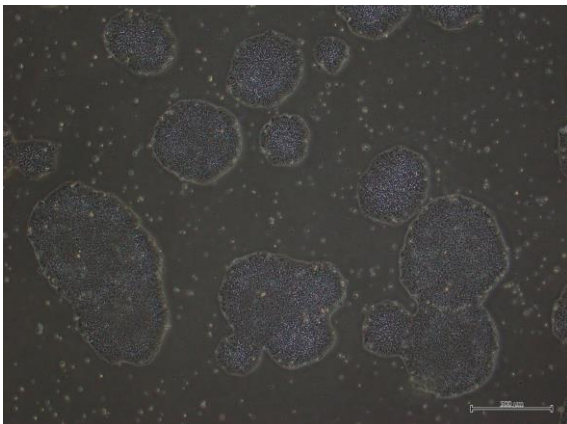
CiRA-j-1573-C: passage-3



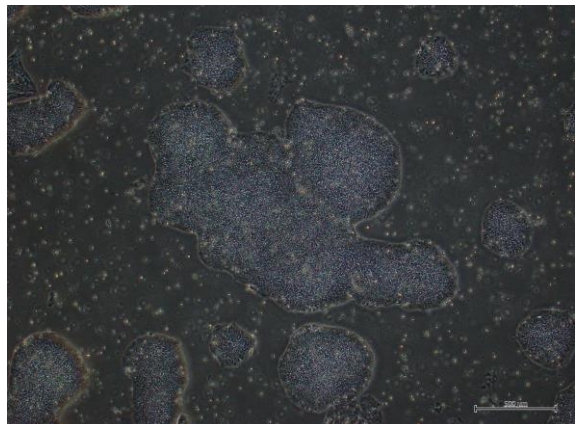
CiRA-j-1573-D: passage-3



CiRA-j-1573-E: passage-3



CiRA-j-1573-F: passage-3



(All images were captured at 4x magnification)